



Experts in Specialized Construction
Solutions for Lasting Impact!

We build the future

Locate Us: Spintex | Tudu | Weija | Kumasi



HIRALCO COMPANY LIMITED

WE BUILD THE FUTURE



HEAD OFFICE

OPPOSITE PRINTEX JUNCTION BUS
STOP, SPINTEX ROAD, ACCRA

SPINTEX | TUDU | WEIJA | KUMASI

T - +233 527 777 799

E - info@hircogroup.com

WWW.HIRALCOGROUP.COM

HIRALCO COMPANY LIMITED

TABLE OF CONTENTS

07 WHO WE ARE

08 WHAT WE DO

09 INDUSTRIES WE SERVE

10 HOW WE WORK

11 PRODUCT CATEGORIES

PRODUCT CATEGORIES

12 Waterproofing Solutions

- Acrylic waterproofing
- Bitumen coating systems
- Bitumen membrane systems
- Cementitious waterproofing
- Coating reinforcements
- Flashing tapes
- PVC waterbars
- Rapid stopping mortar
- SMP based waterproofing
- Swellable waterstops

36 Construction Chemicals

- Bonding agents
- Admixtures
- Thinners
- Release agents

47 Protective Coating

- Galvanising coating
- Masonry protective coating
- Wood protective coating

51 Industrial Flooring

- Color chart
- Epoxy systems
- Polyurethane systems

61 Concrete Repair

- Fairing coats
- Grouts
- Structural repair mortars
- Thermal insulation boards

68 Geotextiles

- Non woven
- Woven

71 Geomembranes

- Dimple sheets (drainage boards)
- Smooth LDPE membranes
- Smooth HDPE membranes

76 Joint sealants and adhesives

- Adhesives
- Anchoring mortar
- Filler foams
- Joint sealants

WHO WE ARE

Hiralco is a leading supplier and applicator of specialized construction solutions in Ghana and West Africa. With decades of combined experience, we provide high-performance products and services for industrial flooring, waterproofing, concrete repair, construction chemicals and architectural hardware.



MISSION

Provide innovative, high-quality solutions that enhance the durability, safety, and sustainability of the built environment.



VISION

Be the preferred partner for construction professionals seeking reliable, innovative, and sustainable solutions in Ghana.

"Every landmark project stands not just on concrete and steel, but on the strength of trusted partners who deliver the right solutions at the right time."

WHAT WE DO

Waterproofing & Dampproofing



Roof, basement, and substructure solutions using membranes, coatings, and injection grouts.

Geotextiles & Geomembranes



Drainage, soil stabilization, and waterproof barriers for civil works.

Industrial Epoxy & PU Flooring



Epoxy, Polyurethane (PU), self-leveling, anti-slip coatings for warehouses, factories, and showrooms.

Construction Chemicals



Admixtures, bonding agents, curing compounds, and surface treatments.

Concrete Repair



Crack injection, surface repairs, grouting, and structural strengthening.

Architectural Door Hardware



Locks, handles, closers, panic bars, and complete door solutions.

INDUSTRIES WE SERVE

At Hiralco, our expertise and high-performance solutions are trusted across diverse sectors where durability, protection, and precision matter most.

Water Treatment & Utilities

We offer watertight solutions for tanks, reservoirs, and treatment plants.

Healthcare & Pharmaceuticals

We deliver seamless, hygienic flooring systems for hospitals, labs, and cleanrooms.

Oil, Gas & Energy

Our protective coatings and sealants safeguard infrastructure in the most demanding environments.

Industrial & Manufacturing

We provide chemical-resistant flooring and waterproofing systems ideal for factories, warehouses, and processing facilities.

Retail & Hospitality

From showrooms to hotels, our finishes and architectural hardware bring durability and design together.

Education & Institutions

Low-maintenance and long-lasting solutions for schools, universities, and government buildings.

Construction & Real Estate

From high-rises to industrial parks, we support contractors and developers with essential building materials and surface systems.

Infrastructure & Transport

Bridges, roads, and terminals depend on our waterproofing, repair products, and jointing systems.

Mining & Engineering

Tough environments demand tougher solutions—from geotextiles to erosion-resistant coatings.

HOW WE WORK



Solution Engineering

Our team recommends fit-for-purpose systems—whether for flooring, waterproofing, or structural protection—based on performance criteria, durability, and compliance standards.



Application Support & Methodology

We develop tailored method statements, application guidelines, and, where needed, assist with mock-ups or on-site trials to validate system performance.



Lifecycle Support & Maintenance Planning

We assist with long-term performance planning through maintenance recommendations, durability assessments, and after-project reviews.

Project Analysis & Site Evaluation

We start with a comprehensive review of the project scope, drawings, and site conditions to identify technical requirements and risk factors.



Specification & BOQ Integration

We provide detailed technical specifications and Bill of Materials aligned with your project documentation, ensuring seamless integration into procurement and planning.



Quality Assurance & Supervision

Our technical team offers periodic site visits, QA/QC checklists, and applicator coordination to maintain execution quality and adherence to standards.



At Hiralco, we approach every project as a technical partner—focused on performance, precision, and project success. Our process ensures each solution is engineered to meet your project's specific demands.

PRODUCT CATALOGUE

WATERPROOFING SOLUTIONS



CAMPOLIN is a rubber waterproofing, emulsion acrylic copolymer type. **CAMPOLIN FIBER** is a waterproofing based on new generation acrylic resins, with reinforcing fibers that allow its application without the need for a polyester reinforcement. Water based product, solvent free, without tar or other asphalt materials.

TECHNICAL DATA

COMPOSITION	ACRYLIC EMULSION
COLOR	WHITE, GREY, RED, WHITE
PACK SIZE	5 KG, 20 KG
PACK TYPE	BUCKET



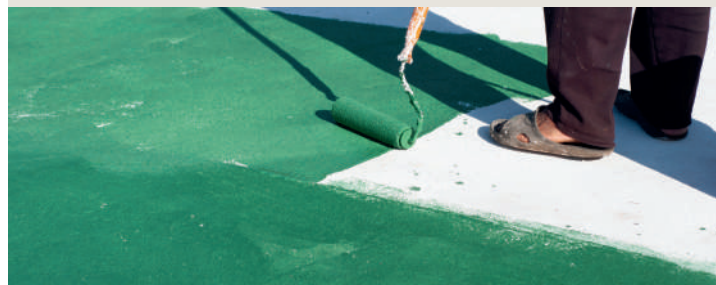
APPLICATION DATA

COVERAGE	1.8KG / 1 SQM
CURING TIME	24 HRS

APPLICATION

The surface must be as smooth as possible. Lightly moisten the surface before application or apply a first layer diluted with 20% water. Place the **TEXTIL** reinforcement in bands of 20 cm for perimeters and joints. In case of trafficable roofs use **TEXTIL** for all the surface.

- Protection coating of walls, edge slabs and concrete structures.
- Waterproofing on existing balconies and roofs with clay tiles and paving stone
- Not recommended under tiles or products where water could be ponded





BITUPROOF/AQUAMAC



Bostik Solvent Free Waterproofer for Roofs is a nonfibrated, flexible bitumen emulsion of medium brushing consistency for use on all common roof surfaces. It is dark brown in colour but dries to form a black finish.

TECHNICAL DATA

COMPOSITION	BITUMEN EMULSION
COLOR	BLACK FINISH
PACK SIZE	5 LTRS, 22.5 LTRS
PACK TYPE	GALLON, BUCKET



BITUMEN EMULSION



APPLICATION DATA

COVERAGE	0.7 LTRS / 1 SQM
CURING TIME	4 - 6hrs

APPLICATION

Apply a minimum of two coats of Bostik Solvent Free Waterproofing for Roofs at a rate of 0.7 litres per m2. Allow 24 hours and apply each coat at right angles to the previous coat.

- For use on fibre/cement, roofing felt, mastic asphalt, corrugated iron, slates, tiles, lead, copper and zinc roof surfaces
- Dries to form a long lasting waterproof coating
- Brush on



BLACK BITUMEN PAINT



Bostik Bituminous Black Paint is a protective coating for external waterproofing and weather protection for use on ferrous and non-ferrous metals, concrete, roofing felt, fibre cement, corrugated iron, asphalt and wood.

TECHNICAL DATA

COMPOSITION	BITUMEN SOLUTION
COLOR	BLACK
PACK SIZE	5 LTRS, 22.5 LTRS
PACK TYPE	GALLON, BUCKET



APPLICATION DATA

COVERAGE	1 LTRS / 4 - 6 SQM
CURING TIME	24 HRS

APPLICATION

Bostik Bituminous Black Paint is ready for use and thinning is not normally necessary. Apply at least two coats by brush allowing each coat to dry (normally 24 hours) before applying the next.

- For metalwork and roofs
- For wood, metal, roofing felt & cement
- Brush on



DAMPPROOFER & WATERPROOFER



Bostik Aquaprufe Damp-Proofer & Waterproofer is a flexible, cold applied, odourless, rubber enriched bitumen emulsion for use both internally and externally. Bostik Aquaprufe Damp-Proofer & Waterproofer must be overlaid with a minimum 50mm flooring screed.

TECHNICAL DATA

COMPOSITION	BITUMEN & RUBBER LATEX
COLOR	BLACK
PACK SIZE	5 TLRS, 25LTRS
PACK TYPE	GALLON, BUCKET



APPLICATION DATA

COVERAGE	1.5KG / 1.25 - 2SQM
CURING TIME	24 HRS

APPLICATION

Apply each coat by brush using 0.8 litres per m², continuing the treatment up the walls to join the existing damp proof course. Allow the first to dry, and apply the second at a right angle to the first. When dry, lay a sand/cement or concrete screed of at least 50mm thickness over the membrane.

- For concrete and brick walls & floors
- Can be applied to damp surfaces
- Brush on





Nitoproof 10 is a brown/black liquid blend of selected bitumen emulsified with water to give an easily applied protective coating. Acts as a damp-proof membrane and vapour seal for concrete and masonry. It can also be used as a protective coating for concrete below ground.

TECHNICAL DATA

COMPOSITION	BITUMEN EMULSION
COLOR	BLACK
PACK SIZE	200 LTRS
PACK TYPE	BARREL



APPLICATION DATA

COVERAGE	1 LTR / 2 - 5 SQM
CURING TIME	2 - 3 HRS

APPLICATION

Nitoproof 10 may be applied by brush, broom or squeegee. It is recommended that one or two coats should be applied depending on the degree of protection required. Allow a minimum of 2 hours between coats.

- Multipurpose, serves both as a protective coating and curing membrane
- Resists attack by chloride and sulphate ions present in the ground water
- Foundation protective coating





Nitoproof 5-35 is a rubber bitumen emulsion. It is supplied as a single component liquid, dark brown in colour, which dries to form a black, flexible coating. Provides a highly effective Damp proofing membrane, with cost and labour saving supplementary benefits.

TECHNICAL DATA

COMPOSITION	RUBBER BITUMEN EMULSION
COLOR	BLACK
PACK SIZE	200 LTRS
PACK TYPE	BARREL

RUBBERISED BITUMEN EMULSION



APPLICATION DATA

COVERAGE	1 LTR / 1 SQM
CURING TIME	2 - 3 HRS

APPLICATION

Nitoproof 5-35 should be applied by brush or squeegee to prepared surfaces. Stir well before use, replace lid when not in use. Soak up any spillage with sand or sawdust and wash down immediately.

- Protective coating for below ground concrete & concrete foundations
- Damp proof membrane in 'sandwich construction. Dual purpose Damp proofing and curing compound
- General purpose Damp proofing for walls and floors





EMUFAL SOLID is a water-soluble asphalt emulsion for cold application with a viscous consistency. It is used as a coating for walls, foundations, etc. or as a bituminous emulsion for the protection of surfaces, concretes, etc.

TECHNICAL DATA

COMPOSITION	ASPHALT EMULSION
COLOR	BLACK
PACK SIZE	25 KG
PACK TYPE	BUCKET



APPLICATION DATA

COVERAGE	1 KG / 1 SQM
CURING TIME	24 HRS

APPLICATION

The product is applied cold. Shake well before use. As a primer it is applied with a brush or roller (diluted in water 1:2) in one or two layers. As a protection, a first layer is applied as a diluted primer with two (2) or three (3) parts of water and then two or more undiluted layers are applied.

- Emulsion for asphalt waterproofing support preparation
- Waterproof protection for non-potable water tanks, walls, tanks and pipes against external agents
- Protection of foundations, walls and concrete structures



B PR 101



B PR 101 is a ready to use waterproofing material and primer for bituminous membranes that obtained by mixing water and bitumen by using special methods. Suitable for interior applications because of non-toxic and non-flammable content. Water based.

TECHNICAL DATA

COMPOSITION	BITUMEN
COLOR	BLACK
PACK SIZE	17 KG
PACK TYPE	DRUM



APPLICATION DATA

COVERAGE	45 - 50 SQM
CURING TIME	24HRS

APPLICATION

B PR 101 should be applied as cold. It should be diluted with 20% water then applied with bitumen brush or airless gun. It dries within 4-5 hours depending on the weather conditions. Second layer must be applied after first layer completely dry

- Primer for bitumen rolls application
- In horizontal and vertical applications
- In wet areas insulation
- Applied onto construction molds for easy demolding



P 3000 / P 3000 S



APP (Atactic Polypropylene) Modified, Bituminous Waterproofing Membrane. Its upper surface is coated with PE/Sand, sub surface is coated with PE. It is reinforced with Polyester.

TECHNICAL DATA

COMPOSITION	APP MODIFIED BITUMEN MEBRANE
COLOR	SMOOTH BLACK / SAND FINISH
PACK SIZE	1 M X 10 M
PACK TYPE	ROLL



APPLICATION DATA

COVERAGE	10 SQM
CURING TIME	24 - 48HRS

APPLICATION

Clean and prime the surface, then align and re-roll the membrane. Use a gas torch to heat the underside and substrate, then press it onto the surface. Overlap joints (10–15 cm), torch-seal them, and ensure proper bonding without air pockets.

- 3mm thick
- App bitumen membrane is applied for waterproofing roofs, basements, and foundations.
- It is torched onto surfaces using heat to create a seamless, durable, and water-resistant barrier.



P 4000 / P 4000 S



APP (Atactic Polypropylene) Modified, Bituminous Waterproofing Membrane It's upper surface is coated with PE/Sand, sub surface is coated with PE. It is reinforcement with Polyester.

TECHNICAL DATA

COMPOSITION	APP MODIFIED BITUMEN MEBRANE
COLOR	SMOOTH BLACK / SAND FINISH
PACK SIZE	1 M X 10 M
PACK TYPE	ROLL



APPLICATION DATA

COVERAGE	10 SQM
CURING TIME	24 - 48HRS

APPLICATION

Clean and prime the surface, then align and re-roll the membrane. Use a gas torch to heat the underside and substrate, then press it onto the surface. Overlap joints (10-15 cm), torch-seal them, and ensure proper bonding without air pockets.

- 4mm thick
- App bitumen membrane is applied for waterproofing roofs, basements, and foundations.
- It is torched onto surfaces using heat to create a seamless, durable, and water-resistant barrier.





APP (Atactic Polypropylene) Modified, Bituminous Waterproofing Membrane. It's upper surface is coated with Slate, sub surface is coated with PE. It is reinforcement with Polyester.

TECHNICAL DATA

COMPOSITION	APP MODIFIED BITUMEN MEBRANE
COLOR	RED, GREEN , GREY SILICA FINISH
PACK SIZE	1 M X 10 M
PACK TYPE	ROLL



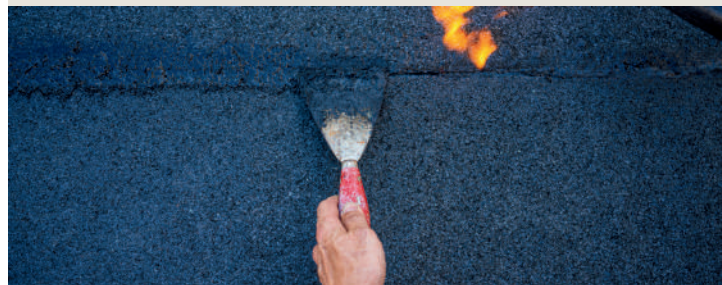
APPLICATION DATA

COVERAGE	10 SQM
CURING TIME	24 - 48HRS

APPLICATION

Clean and prime the surface, then align and re-roll the membrane. Use a gas torch to heat the underside and substrate, then press it onto the surface. Overlap joints (10-15 cm), torch-seal them, and ensure proper bonding without air pockets.

- 4mm thick
- App bitumen membrane is applied for waterproofing roofs, basements, and foundations.
- It is torched onto surfaces using heat to create a seamless, durable, and water-resistant barrier.





CEMENTECH C301 DUO



It is cement based, one-component, brush consistency, light-red colored powder sealing slurry that is reinforced by polymeric additives, and used in the solution of problem arising from capillary effects. CemenTech C1 Duo creates crystals that don't melt within water when it reacts with water.

TECHNICAL DATA

COMPOSITION	CRYSTALLINE CEMENT BASED
COLOR	GREY
PACK SIZE	25 KG
PACK TYPE	BAG



CEMENTITIOUS WATERPROOFING



APPLICATION DATA

COVERAGE	1.5 - 2KG / 1 SQM
CURING TIME	24 HRS

APPLICATION

Application should be at least in two layers and should cover the substrate of each layer properly. The first layer is applied with a wall brush; after the first layer is dried completely, the second layer should be reapplied with a wall brush.

- In continuously wet, humid and damp areas such as garage, balcony, terrace and cellar,
- In continuously wet, humid and damp areas such as garage, balcony, terrace and cellar,
- Interior and exterior





CEMENTECH X300 COMBI



It is cement-based, two-component, semi flexible sealing slurry that is reinforced by polymeric additives and used in the solution of waterproofing problems. It can be from the positive side only.

TECHNICAL DATA

COMPOSITION	CEMENT BASED POLYMER MODIFIED
COLOR	GREY
PACK SIZE	20KG PART A, 5KG PART B
PACK TYPE	BAG , DRUM



CEMENTITIOUS WATERPROOFING



APPLICATION DATA

COVERAGE	1.5 - 2KG / 1 SQM
CURING TIME	24 HRS

APPLICATION

Powder part A should be poured slowly into liquid part b and mixed with low cycle until cluster free mixture is obtained. Application should be at least two layers thick. After applying the first layer, at least 4-6 hours should be rested and second layer should be applied before waiting period exceeds 24 hours.

- In interior and exterior, horizontal and vertical applications, from positive side only,
- Foundations, basements and underground structures
- In continuously wet, humid and damp areas such as balcony, terrace and cellars





Brushbond TGP is an economical cementitious coating system designed for waterproofing concrete against low (less than 1 bar) positive or negative hydrostatic water pressure in a wide variety of structures.

TECHNICAL DATA

COMPOSITION	CRYSTALLINE POWDER
COLOR	LIGHT GREY
PACK SIZE	20 KG
PACK TYPE	BAG

CEMENTITIOUS WATERPROOFING



APPLICATION DATA

COVERAGE	1.5KG / 1 SQM
CURING TIME	48 HRS

APPLICATION

Brushbond TGP slurry coat can be applied with a soft brush, broom, or plaster sprayer. Ensure the slurry is worked well into openings, rough surfaces, joints and routed out areas. Make the second application when the first coat has reached initial set.

- Sewage treatment and water treatment plants
- Water tanks, concrete pipes, manholes
- Can be applied to new or old concrete in both interior and exterior locations





Nitocote CM210 provides a cementitious, elastomeric waterproof coating with inherent crack-bridging ability. Nitocote CM210 two-component polymer modified cementitious coating is supplied in pre-packaged form.

TECHNICAL DATA

COMPOSITION	POLYMER MODIFIED CEMENT
COLOR	GREY
PACK SIZE	18KG PART A, 5KG PART B
PACK TYPE	BAG , DRUM



APPLICATION DATA

COVERAGE	1.9KG / 1 SQM
CURING TIME	24 HRS

APPLICATION

The product is designed to be easily mixed on site using a slow speed drill fitted with a mixing paddle and then applied to the substrate using either brush, trowel or spray. Roller application may also be used, however finishing the surface with a trowel is recommended for best results.

- Potable water retaining and excluding structures
- Foundations in contact with ground water under saline conditions
- Wet areas: Kitchens, bathrooms, shower rooms



FIBERMESH 60



Fibermesh is a reinforcing mesh made of synthetic fibers that is used in liquid-applied waterproofing systems. It is embedded into the first coat of waterproofing to improve tensile strength, crack-bridging, and durability.

TECHNICAL DATA

COMPOSITION	FIBER MESH
COLOR	WHITE
PACK SIZE	1 M X 100 M
PACK TYPE	ROLL

REINFORCEMENT MESH



APPLICATION DATA

COVERAGE	100 SQM
CURING TIME	N/A

APPLICATION

FIBERMESH 60 is a high alkali-resistant mesh for application of cementitious waterproofing

- Highly resistant to alkali
- High tensile strength
- Thin and soft
- Suitable for thin layer waterproofing applications



PH 127



PH 127 is a TPE based waterproofing elastic tape to use on joints and corners, special coated knit fabric: Extension in cross direction and rigid lengthwise

TECHNICAL DATA

COMPOSITION	MODIFIED POLYESTER KNIT FABRIC
COLOR	GREY
PACK SIZE	120 MM * 50 M / 27 GSM)
PACK TYPE	ROLL

REINFORCEMENT POLYESTER TAPE



APPLICATION DATA

COVERAGE	50 MM
CURING TIME	N/A

APPLICATION

Clean and prime the surface, then align and re-roll the membrane. Use a gas torch to heat the underside and substrate, then press it onto the surface. Overlap joints (10–15 cm), torch-seal them, and ensure proper bonding without air pockets.

- Used in bathrooms, kitchens, toilets, terraces and balconies, under ceramic applications and wall/floor joints.
- To repair cracks in plaster and screed





Mudglass is embedded in liquid-applied membranes to enhance membrane strength, bridge cracks, and improve flexibility.

TECHNICAL DATA	
COMPOSITION	POLYESTER NONWOVEN
COLOR	WHITE
PACK SIZE	1 YD X 108 YD
PACK TYPE	ROLL



APPLICATION DATA	
COVERAGE	108 SQYD
CURING TIME	N/A
APPLICATION Clean and prime the surface, then apply the first layer of the liquid membrane. While it is still wet, embed the geotextile fabric smoothly into the coating, avoiding wrinkles or air pockets. Once set, apply one or more additional coats over the fabric to fully saturate and cover it.	
<ul style="list-style-type: none"> It helps prevent failures like tearing, delamination, and uneven thickness, especially in high-movement or high-traffic areas Commonly applied in waterproofing systems for roofs, terraces, tanks, and wet areas, it ensures durability and long-term protection 	





EKOBIT is a bituminous self-adhesive waterproofing tape protected by a metal foil in aluminium, natural or coloured, reinforced with a polyester layer.

TECHNICAL DATA

COMPOSITION	BITUMEN TAPE PROTECTED BY ALUMINIUM FILM
COLOR	SILVER
PACK SIZE	10 MT - 2", 3", 4", 6"
PACK TYPE	ROLLS



APPLICATION DATA

COVERAGE	10 MT
CURING TIME	N/A

APPLICATION

Choose the most suitable width and metal finish of the EKOBIT tape; Unroll the EKOBIT tape until the desired length is reached; Remove the silicone release film that covers the adhesive compound and position the EKOBIT tape; Press with a roller or a cloth pad. In case of overlapping, please use at least 5 cm

- For protecting: metal, plastic, asbestos cement, roofs and coverings in general.
- For sealing: frames and skylights, parapets, glass and plastic structures
- For repairing: tiles, gutters, metal pipes, metal plate or asbestos cement roofs





Flexible Waterstop profiles extruded from high grade of Polyvinyl Chloride(PVC) serve to isolate from dampness, moisture and water under pressure and without deformation and technological joints of concreting, in reinforced concrete structures, underground and buried structures under the influence of surface groundwater or sewage

TECHNICAL DATA

COMPOSITION	EXTRUDED POLYVINYL CHLORIDE
COLOR	BLUE
PACK SIZE	15 MT - 6", 8", 10"
PACK TYPE	ROLLS



APPLICATION DATA

COVERAGE	15 MT
CURING TIME	N/A

APPLICATION

To apply a PVC waterbar, position it centrally in the joint and securely tie it to the reinforcement. Heat-weld the joints for a watertight seal, avoiding overlaps. Ensure it stays in place during concrete pouring and is fully embedded with no air gaps.

- EMPRO®PVC WS J are used to seal construction and expansion joints in water retaining structures which subjected to hydrostatic pressure such as reservoirs, water towers, dams, canals, swimming pools sewage tanks etc. in addition to keep water out of concrete structures such as basements, underground car parks, tunnels, subways, retaining walls





Renderoc Plug is supplied as a ready to use blend of dry powders which requires only the site addition of clean water to produce a highly consistent, rapid setting mortar which is easy to apply in many difficult conditions.

TECHNICAL DATA

COMPOSITION	BLEND OF AGGREGATES AND CHEMICALS
COLOR	GREY
PACK SIZE	10 KG
PACK TYPE	BAG



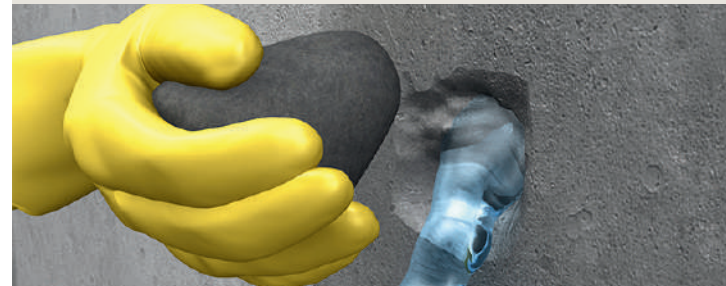
APPLICATION DATA

COVERAGE	PLEASE REFER TO PRODUCT TDS FOR MORE INFO
CURING TIME	1 MIN

APPLICATION

Trowel apply or hand-knead the mixed mortar in place, ensuring maximum contact with the substrate before the material sets. If being used to plug running water, Renderoc Plug should be used and held in place until the initial set is reached.

- Emergency water-stopping capability
- Foundations, basements and underground structures
- Balconies and terraces, wet areas.





Aqua Blocker® is a solvent-, water- and bitumen-free, as well as non-slump water-proofing sealant for buildings acc. to DIN 18195. Aqua Blocker® liquid is a sealing compound for horizontal surfaces.

TECHNICAL DATA

COMPOSITION	SMP BASED LIQUID
COLOR	LIGHT GREY
PACK SIZE	14 KG
PACK TYPE	BUCKET



APPLICATION DATA

COVERAGE	1.5KG / 1 SQM
CURING TIME	24 HRS

APPLICATION

It is ready-for-use and can be used directly from the packaging. Applied evenly and continuously in two layers using a short haired velour roller. It is directly poured out of the bag onto the substrate and is spread out with a notched trowel.

- In interior and exterior, horizontal and vertical applications
- Foundations, basements and underground structures
- Balconies and terraces, wet areas.





High performance swellable waterstop for in-situ concrete. Integral sealing for construction joints in concrete cast insitu. Convenient and problem solving in situations where a conventional waterstop would require complex shuttering.

TECHNICAL DATA	
COMPOSITION	HYDROPHILIC WATERSTOP
COLOR	RED
PACK SIZE	5 MT - 10MM X 20MM
PACK TYPE	COIL



APPLICATION DATA

COVERAGE	5 MTRS
CURING TIME	N/A

APPLICATION

To apply Supercast SW20, clean the concrete surface, then firmly press the swellbar into place along the joint. Fix it using a suitable adhesive to keep it secure before pouring concrete. Ensure it's not exposed to water before the pour, as premature swelling can affect performance.

- Typical uses include secant piled and diaphragm walled basements, pile caps and casting against old concrete
- Supercast SW20 can provide simple solutions to detailing pipe entries, construction joints in the vertical plane and to kicker joints



CONSTRUCTION CHEMICALS



FITBOND SBR



FitBond SBR is a styrene butadiene rubber based bonding aid and additive for mortars, renders and concrete. It is also used as an additive in mortars for repair of damaged concrete elements, bonding rush coat for plaster etc.

TECHNICAL DATA

COMPOSITION	MIXED FATTY ACIDS AND SODIUM HYDROXIDE
COLOR	MILKY WHITE
PACK SIZE	5 LTRS / 20 LTRS
PACK TYPE	GALLON, DRUM



BONDING AGENT



APPLICATION DATA

COVERAGE	1 LTR / 5-7 SQM
CURING TIME	PLEASE REFER TO PRODUCT TDS FOR MORE INFO

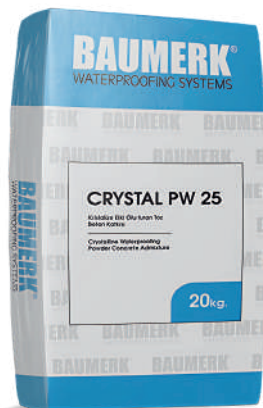
APPLICATION

Stir the FitBond SBR well and apply using brush, roller or spray on the prepared surface. Ensure that the material is spread evenly on the entire surface. Subsequent material to be bonded should be placed while FitBond SBR is still tacky.

- It is used to increase water tightness of renders to be applied on internal and external walls, basements, swimming pools, water tanks, tunnels, underpasses, sludge tanks etc.



CRYSTAL PW25



CRYSTAL PW 25 is a waterproofing concrete admixture that reacts with moisture in the concrete and forms crystal fiber on the pores and capillary gaps of concrete to provide permanently water impermeability.

TECHNICAL DATA

COMPOSITION	POWDERED CRYSTALLINE CHEMICALS
COLOR	GREY
PACK SIZE	20 KG
PACK TYPE	BAG

CRYSTALLINE ADMIXTURE



APPLICATION DATA

COVERAGE	0.7-2.0 % BY WEIGHT OF CEMENT IN MIXTURE
CURING TIME	PLEASE REFER TO PRODUCT TDS FOR MORE INFO

APPLICATION

Water/Cement ratio should be $\leq 0,55$. CRYSTAL PW 25 is mixed with water as the ratio of 1:0,4 and then added into the mixture and mixed well minimum 5 minutes. After mixing, mixed concrete is poured

- Foundations, basements, tunnels, dams
- Precast concrete elements potable water tanks and waste water tanks
- Water treatment plant, swimming pools, elevator pits, garage



POWLOG



POWLOG is a high quality, water-repellent powder admixture used for water and damp proofing in plaster, screed and concrete applications.

TECHNICAL DATA

COMPOSITION	ACTIVE CHEMICAL POWDER
COLOR	WHITE
PACK SIZE	500 G
PACK TYPE	SACHET

POWDER ADMIXTURE



APPLICATION DATA

COVERAGE	1 (50KG) BAG OF CEMENT : 1 (500G) SACHET
CURING TIME	PLEASE REFER TO PRODUCT TDS FOR MORE INFO

APPLICATION

Fresh cement and POWLOG must be mixed firstly. Then, sand aggregate are poured into the powders. Water is slowly added into the powder mixture at finally. All ingredients are mixed until homogenous mixture is obtained.

- Suitable for interior and exterior plaster and screed applications
- In wet volumes such as bathroom, kitchen, balcony,
- In basements, cesspool, gallery, foundation, curtain wall, water treatment plant and pools





BOSCOMIX P152



Bostik BoscoMix P152 is a new generation "A³ Technology" enhanced, grey-colored, permanently active, integral crystalline permeability reducing powdered admixture for concrete works. It is ideal for use in all type of concrete works and creates a long term durable waterproof concrete.

TECHNICAL DATA

COMPOSITION	PERMANENTLY ACTIVE CRYSTALLINE CHEMICALS
COLOR	GREY
PACK SIZE	20 KG
PACK TYPE	BAG



CRYSTALLIZED ADMIXTURE



APPLICATION DATA

COVERAGE	1.0 - 1.5 % BY WEIGHT OF CEMENT IN MIXTURE
CURING TIME	PLEASE REFER TO PRODUCT TDS FOR MORE INFO

APPLICATION

Bostik BoscoMix P152 should be added at the time of mix batching stage of the ready-mix concrete at concrete plant. To obtain a homogenous mixture, mix the dry components for a minimum 5 minutes that the admix has been thoroughly well dispersed throughout the concrete mix.

- Foundations and basements and base-slabs, blind-side or single-face concrete works, precast concrete, manholes
- Water containment structures, waste treatment facilities, marine structures, dams, water reservoirs and swimming pools





INTEGRAL WATERPROOFER



Bostik Integral Waterproofer is an alkaline soap of mixed fatty acids which react chemically with cement to form hydrophobic salts that reduces water penetration. Bostik Integral Waterproofer helps reduce efflorescence and lime bloom by restricting moisture movement. It aids the reduction of crazing in rich mixtures by controlling the rate of evaporation.

TECHNICAL DATA

COMPOSITION	MIXED FATTY ACIDS AND SODIUM HYDROXIDE
COLOR	YELLOW
PACK SIZE	5 LTRS / 25 LTRS
PACK TYPE	GALLON, DRUM



MORTAR PLASTICISER



APPLICATION DATA

COVERAGE	PLEASE REFER TO PRODUCT TDS FOR MORE INFO
CURING TIME	16 HRS

APPLICATION

Apply render to a properly prepared surface. Gauge mix as stiff as possible to minimise the risk of cracking. Apply render in 2 coats to a total thickness of 20 to 25mm.

- It waterproofs and plasticises mortar for external or basement renderings and in swimming pools, sewers and tank linings as part of the overall waterproofing system specification





BK CHLORIDE FREE FROSTPROOFER



Bostik Frostproof is based on calcium chloride and surface active materials. It is formulated to accelerate the setting of cementitious mixes in cold weather and to aid the attainment of high early strength in concrete and other cement mixes.

TECHNICAL DATA

COMPOSITION	CALCIUM CHLORIDE SOLUTION
COLOR	TRANSPARENT BROWN
PACK SIZE	25 LTRS
PACK TYPE	DRUM



CONCRETE SETTING ACCELERATOR



APPLICATION DATA

COVERAGE	PLEASE REFER TO PRODUCT TDS FOR MORE INFO
CURING TIME	PLEASE REFER TO PRODUCT TDS FOR MORE INFO

APPLICATION

Use only with ordinary or rapid hardening Portland Cement, masonry cements or white cement. Only mix enough material that can be used in the time available. Do not attempt to add more water once the mix has started to stiffen.

- It is suitable for use with cement and concrete mixes, precast concrete, dense heavy duty renderings and flooring
- Increases strength of concrete mix





Bostik Entrainit Powdered Mortar Plasticiser is a powdered mortar plasticiser and air-entraining agent which improves the workability of the mortar, its durability and frost protection without the addition of lime. It is suitable for use in mortars for bricklaying, blockwork, rendering and pointing.

TECHNICAL DATA	
COMPOSITION	SOLUBLE ORGANIC SULPHONATE
COLOR	YELLOW
PACK SIZE	21 G
PACK TYPE	SACHET



APPLICATION DATA

COVERAGE	1 (50KG) BAG OF CEMENT : 1 (21 G) SACHET
CURING TIME	PLEASE REFER TO PRODUCT TDS FOR MORE INFO

APPLICATION

Add the contents of sachet/scoop directly into the mixer at any stage, at the rate of 1 sachet or scoop per 50kg of cement, depending on the mix requirements. Entrainit reduces the amount of water required. Adjust to achieve desired consistency.

- Improves workability and durability of mortar
- Minimises cracking and crazing
- Ready to use sachets



BRAVO

CELLULOSE THINNER



Cellulose thinner, also known as lacquer thinner, is a mixture of solvents that can dissolve different resins or plastics used in modern lacquer. In the past, lacquer thinners contained alkyl esters, ketones, aromatic hydrocarbons, ethers, and/or alcohols.

TECHNICAL DATA

COMPOSITION	TOLUENE COMPOSITE
COLOR	CLEAR
PACK SIZE	4.5 LTRS / 205 LTRS
PACK TYPE	GALLON, DRUM



LACQUER THINNER



APPLICATION DATA

COVERAGE	PLEASE REFER TO PRODUCT TDS FOR MORE INFO
CURING TIME	PLEASE REFER TO PRODUCT TDS FOR MORE INFO
APPLICATION Cellulose thinner is used to dilute oil-based paints and finishes for smoother application and better flow.	
<ul style="list-style-type: none"> It also serves to clean brushes, rollers, and surfaces before or after painting. Additionally, it helps in removing uncured paint and preparing surfaces for coating. 	





Cellulose thinner, also known as lacquer thinner, is a mixture of solvents that can dissolve different resins or plastics used in modern lacquer. In the past, lacquer thinners contained alkyl esters, ketones, aromatic hydrocarbons, ethers, and/or alcohols.

TECHNICAL DATA	
COMPOSITION	TOLUENE COMPOSITE
COLOR	CLEAR
PACK SIZE	4.5 LTRS / 205 LTRS
PACK TYPE	GALLON, DRUM



APPLICATION DATA	
COVERAGE	PLEASE REFER TO PRODUCT TDS FOR MORE INFO
CURING TIME	PLEASE REFER TO PRODUCT TDS FOR MORE INFO
APPLICATION Cellulose thinner is used to dilute oil-based paints and finishes for smoother application and better flow.	
<ul style="list-style-type: none"> It also serves to clean brushes, rollers, and surfaces before or after painting. Additionally, it helps in removing uncured paint and preparing surfaces for coating. 	





Reebol provides a chemical release action that is superior to that provided by normal oil based release agents. Entrapment of air bubbles at the mould surface is minimised, reducing surface blemishes and substantially reducing remedial costs.

TECHNICAL DATA	
COMPOSITION	BLEND OF MINERAL OILS
COLOR	PALE STRAW
PACK SIZE	210 LTRS
PACK TYPE	BARREL



APPLICATION DATA	
COVERAGE	1 LTR / 20-60 SQM
CURING TIME	PLEASE REFER TO PRODUCT TDS FOR MORE INFO
APPLICATION Reebol can be applied by all normal methods, including brush, sponge and conventional spray. Where suitable, spray, application is recommended. New, unsealed, timber surfaces should be re-coated if delay in use of the mould leads to absorption of the release agent into the timber.	
<ul style="list-style-type: none"> For quick, clean and easy stripping of moulds and formwork. For high quality, fair-faced and stain-free concrete. 	



PROTECTIVE COATINGS



GalvaFroid zinc rich coating is formulated as an easily applied, cold galvanising protection against corrosion on all ferrous metals. GalvaFroid has a mid-grey, matt finish.

TECHNICAL DATA

COMPOSITION	ZINC
COLOR	GREY
PACK SIZE	1.9LTRS
PACK TYPE	CAN

GALVANISING COATING



APPLICATION DATA

COVERAGE	1LTR / 8SQM
CURING TIME	24HRS

APPLICATION

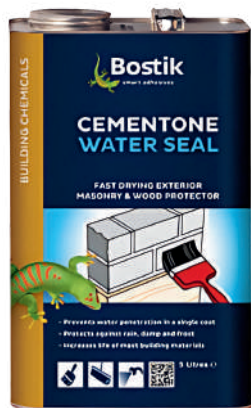
All prepared surfaces should be treated with one or more coats of GalvaFroid. The material should be liberally applied without any attempt to brush or roll out. The required thickness of coating may be built up by successive applications of GalvaFroid when the previous coat is completely dry.

- It is recommended for the protection of structural steelwork, agricultural and construction plant and machinery, gates, railings, iron pipework and guttering, and the rust prevention of in-situ welding work.
- Suitable as a primer or self-finish





CEMENTONE WATERSEAL



Bostik Water Seal is a high performance waterproofer that penetrates deep below the surface to provide a water resistant barrier on porous exterior surfaces. It is suitable for concrete, brick, stone, slate, terracotta, render and timber.

TECHNICAL DATA

COMPOSITION	POLYOXO ALUMINIUM STEARATE BASED
COLOR	CLEAR
PACK SIZE	5 LTRS
PACK TYPE	GALLON



MASONRY & WOOD PROTECTOR



APPLICATION DATA

COVERAGE	1LTR / 2-4SQM
CURING TIME	2 - 3HRS

APPLICATION

Apply Bostik Water Seal generously over the entire surface using a large soft brush or low-pressure spray with a coarse nozzle. Start at the top and work down. Bostik Water Seal is designed to be the outermost coating of a wall, therefore cement paints and renders must be applied before the water-repellent.

- Prevents water penetration in a single coat
- Protects against rain, damp and frost
- Increases life of most building materials





Bartoline Creosote is a natural and highly effective wood preservative made from a complex mixture of hydrocarbon oils containing a controlled amount of tar acids. It prevents timber from drying out and splitting, inhibits the growth of fungi and at the same time destroys insects, which might otherwise damage the wood.

TECHNICAL DATA

COMPOSITION	HYDROCARBON OILS
COLOR	CLEAR, BROWN
PACK SIZE	5 LTRS, 20 LTRS
PACK TYPE	GALLON, DRUM



APPLICATION DATA

COVERAGE	1LTR / 8-10SQM
CURING TIME	24HRS

APPLICATION

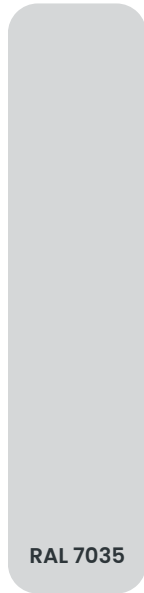
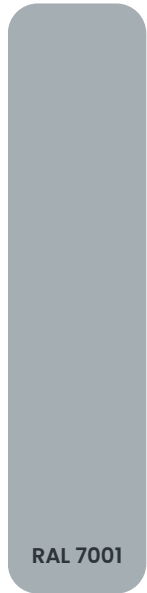
Bartoline Creosote can be applied by brush, spray or dip methods. A deeper colour may be attained by applying further treatments. Apply liberally, soaking the timber to achieve best results. Always ensure that end-grain timbers are fully saturated.

- Prevents timber from drying out and splitting
- Inhibits the growth of fungi
- Destroys insects, which might otherwise damage wood



INDUSTRIAL FLOORING

COLOR CHART



Pristine

EPOPRIME EP



EPOPRIME-EP is a two component epoxy primer for use with Pristine Paints polyurethane and epoxy floor systems. It can also be used as a primer for cementitious floor systems by blinding with fine aggregates.

TECHNICAL DATA	
COMPOSITION	EPOXY BASED
COLOR	CLEAR
PACK SIZE	30KG
PACK TYPE	SET



EPOXY PRIMER



APPLICATION DATA	
COVERAGE	1 30 KG SET / 150 SQM
CURING TIME	7 DAYS
APPLICATION Once mixed, the material should be spread over the floor as selfheating in the container will reduce working time. Apply using a brush or short/medium pile roller. One or more coats may be needed to ensure that a uniform coating is achieved and to compensate for differences in surface porosity.	
<ul style="list-style-type: none"> • Multipurpose: can be used with cement, epoxy and polyurethane based flooring systems • Low viscosity: penetrates into the concrete substrate for a better bond • Supplied in pre-measured packs for ease of mixing and consistency at site 	



Pristine

EPOCOAT EP



Epocoat EP is a two component , pigmented epoxy based coating specially formulated for providing cost effective clean room finish. Jointless nature of the floor envisages better cleanability.

TECHNICAL DATA	
COMPOSITION	EPOXY BASED
COLOR	NEUTRAL
PACK SIZE	6KG
PACK TYPE	SET



EPOXY COATING



APPLICATION DATA	
COVERAGE	1 KG / 4 -5 SQM
CURING TIME	10 -12 HRS
APPLICATION EPOCOAT-EP must be applied immediately after mixing the two components. EPOCOAT-EP is applied with a rubber squeegee and medium nap roller. The roller is used to remove squeegee lines and smooth out the surfaces. Each additional coat may be applied when surface is hard dry, which is about 10-12 hours	
<ul style="list-style-type: none"> • Ware Houses • Light foot traffic areas • Service and utility areas, car workshops and garages • Passages 	



Pristine

EPOGUARD SL



EPOGUARD-SL is a high gloss, self-smoothing, epoxy resin floor finish applied between 1 - 3 mm thickness. It combines outstanding wearing properties with chemical resistance and decorative finish. Ideally suited in situations where a seamless, joint free finish is required and maximum cleanliness is essential

TECHNICAL DATA	
COMPOSITION	EPOXY
COLOR	NEUTRAL
PACK SIZE	15 KG
PACK TYPE	SET



SELF SMOOTHENING EPOXY TOP COAT



APPLICATION DATA	
COVERAGE	1 SET / 5 SQM @ 2MM THK
CURING TIME	7 DAYS
APPLICATION The mixed material should be applied to the primed surface without delay using a trowel or depth set rake to achieve the desired thickness. As soon as the EPOGUARD-SL has been laid, the surface should be gently rolled with a spiked roller in order to release any entrapped air from the mix and to blend out trowel marks.	
<ul style="list-style-type: none"> • Laboratories & clean rooms • Food and beverage production • Pharmaceutical manufacturing • Warehouses and storage areas • Automotive manufacturing • Printing plants • General medium to heavy industry 	



Pristine

EPOSCREED SL



EPOSCREED-SL is a two component Epoxy System comprising of base and Curing Agent. EPOSCREED-SL can be used as a primer as well as underlay/ base coat in Epoxy floor coating system

TECHNICAL DATA	
COMPOSITION	EPOXY BASED
COLOR	CLEAR
PACK SIZE	18 KG
PACK TYPE	SET



EPOXY UNDERLAY MORTAR



APPLICATION DATA	
COVERAGE	1 SET / 3-5 SQM @ 2MM THK
CURING TIME	7 DAYS
APPLICATION The mixed material should be applied to the primed surface without delay using a trowel or depth set rake to achieve the desired thickness. As soon as the EPOGUARD-SL has been laid, the surface should be gently rolled with a spiked roller in order to release any entrapped air from the mix and to blend out trowel marks.	
<ul style="list-style-type: none"> • Laboratories & clean rooms • Food and beverage production • Pharmaceutical manufacturing • Warehouses and storage areas • Automotive manufacturing • Printing plants • General medium to heavy industry 	





Dekguard PU100 is a high quality, one component, aliphatic polyurethane, protective coating which can be applied to a variety of surfaces including steel, wood, concrete and fully cured epoxies. It is supplied as a single pack material ready for on-site use and it provides a low gloss coating.

TECHNICAL DATA	
COMPOSITION	POLYURETHANE
COLOR	GREY
PACK SIZE	20 LTR
PACK TYPE	BUCKET

POLYURETHANE COATING SYSTEM



APPLICATION DATA

COVERAGE	1 LTR/ 10 SQM @ 100 MIC
CURING TIME	5 DAYS

APPLICATION

Apply at a rate of 0.1 – 0.15litres per square meter per coat to achieve a minimum wft of 100-150 microns. If required, the second coat should be applied only after the first coat has been cured and before 24 hours.

- Wherever UV resistance is required
- Underground protection in foundations etc
- UV resistant top coat for epoxy coatings in external areas



Pristine

POLYCOAT



POLYCOAT is solvent based two component floor coating product based on aliphatic polyurethane resin. POLYCOAT combines superior chemical and abrasion resistance with excellent adhesion, colour retention and weatherability.

TECHNICAL DATA	
COMPOSITION	POLYURETHANE BASED
COLOR	GREEN, WHITE, BLACK, YELLOW
PACK SIZE	5.75 KG
PACK TYPE	SET



POLYURETHANE FLOOR COATING



APPLICATION DATA	
COVERAGE	6-8 SQ.MTS/KG PER COAT
CURING TIME	6 HRS
APPLICATION Empty contents of component B into a mixing container and pre-mix to assure the suspension of solids. Add component A and continue to mix to a uniform consistency for 1-2 minutes. Mix with slow speed drill and helical spinner head for 2 minutes. POLYCOAT must be applied immediately after mixing the two components.	
<ul style="list-style-type: none"> • POLYCOAT is a general service polyurethane coating designed to improve cleanability, increase stain resistance and abrasion resistance • Workshops and packaging areas • Warehousing areas • Soft drink bottling plants • Car Park Decks 	



Pristine

POLYFRESH SL



POLYFRESH - SL is a polyurethane resin flooring system having outstanding wearing properties with high chemical resistance and pleasing decorative finish. Ideally suited in aggressive areas where a seamless, joint free finish is required and maximum cleanliness is essential. Suitable for use from 3mm up to 4mm thickness.

TECHNICAL DATA	
COMPOSITION	POLYURETHANE BASED
COLOR	GREY
PACK SIZE	18KG
PACK TYPE	SET



SELF SMOOTHING PU SCREED



APPLICATION DATA	
COVERAGE	1 PACK / 3.5 SQM @ 3MM THK
CURING TIME	7 DAYS
APPLICATION POLYFRESH - SL should be poured onto the prepared and primed substrate and spread using a trowel to achieve the desired thickness. As soon as the product has been laid and as work progresses, the surface should be gently rolled with a spiked roller in order to provide an even surface appearance and to release any trapped air.	
<ul style="list-style-type: none"> • Food and beverage production plants and pharmaceutical manufacturing companies • Warehouse and storage facilities • Semi wet processing zones and chemical plants 	



Pristine

VEPOCHROMA 2K



VEPO CHROMA is a two component water borne aliphatic (non-yellowing) polyurethane top coat ideal for application over floor and wall surfaces. VEPO CHROMA 2K is a water borne poly coating designed to improve cleanability, increase stain resistance and abrasion resistance.

TECHNICAL DATA	
COMPOSITION	POLYPROPYLENE FIBERS
COLOR	CLEAR
PACK SIZE	5 KG
PACK TYPE	SET



WATERBASED POLYURETHANE COATING



APPLICATION DATA	
COVERAGE	1 KG / 6 - 8 SQM - 2 COATS
CURING TIME	6 HRS
APPLICATION VEPO CHROMA must be applied immediately after mixing the two components. VEPO CHROMA is applied with roller.	
<ul style="list-style-type: none"> • Workshops • Packaging areas and warehousing areas • Soft drink bottling plants • Car Park Decks 	



CONCRETE REPAIR

FIBER



FIBER is a 100% polypropylene fiber that disperses homogeneously into the concrete mixture to reduce shrinkage and settlement cracks. This product is produced under the specification limits of TSE EN 14889 and ASTM C-1116 standards and compatible all types of Portland Cement Types and Grades.

TECHNICAL DATA

COMPOSITION	POLYPROPYLENE FIBERS
COLOR	WHITE
PACK SIZE	900 G
PACK TYPE	SACHET

CONCRETE REINFORCEMENT FIBER



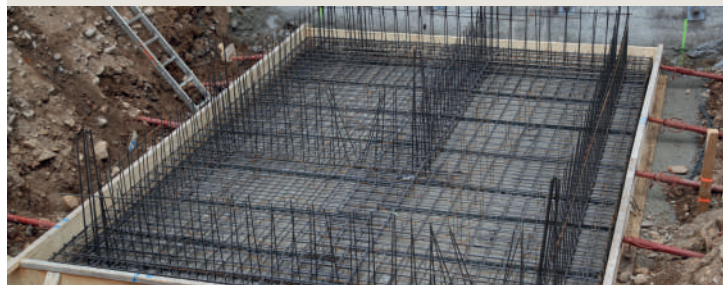
APPLICATION DATA

COVERAGE	450 - 1200G / 1 CUBIC
CURING TIME	N/A

APPLICATION

Add concrete fibers directly into the dry mix or during batching, ensuring even distribution. Mix thoroughly to avoid clumping and achieve uniform dispersion. Place, finish, and cure the concrete as usual—no special tools are needed.

- On precast tunnel elements as a passive fire protection
- On cement based mortars for repairing, plastering, grading and isolation
- On concrete of parking areas and ramps, field concrete and thermal stress exposed concrete.





Bostik GroPox is an epoxy resin-based, two-component, anchoring, montage and repair mortar. Solvent-free. Easy to use and apply. Watertight. Excellent adhesion on concrete and steel.

TECHNICAL DATA	
COMPOSITION	CEMENT BASED WITH EPOXY RESIN
COLOR	GREY
PACK SIZE	3.75 KG PART A , 1.25 KG PART B
PACK TYPE	TIN BUCKET



APPLICATION DATA

COVERAGE	1.7KG / 1 SQM
CURING TIME	7 DAYS

APPLICATION

The material is mixed with a low cycle mixer until a smooth mixture is obtained for minimum 3 minutes. Bostik GroPox is applied to the surface with a trowel or a spatula. The holes should be cleaned with air thoroughly; the holes should be 6mm wider than the reinforcement.

- In all kinds of reinforcement anchorage works
- In the repair and insulation of concrete cracks; in the insulation of crack injection
- Used for the montage and adhesion of all kinds of metal components into concrete or steel components.





Bostik Grout XL has a very strong adhesion feature that's first and second compressive strengths are high. The product is flexible and fluid and also suitable to apply up to 10 cm in one layer. It can be either applied manually or pumped by means of a machine in liquid state. It features expansion quality, doesn't undergo shrinkage and self-settles thanks to its high level of fluidity.

TECHNICAL DATA	
COMPOSITION	AGGREGATE AND CHEMICAL ADDITIVES
COLOR	GREY
PACK SIZE	25 KG
PACK TYPE	BAG



APPLICATION DATA	
COVERAGE	18KG - 22KG / 1 SQM @ 10MM THK
CURING TIME	24 HRS
APPLICATION Water at normal environment temperature is poured into a clean container. Then, some dry mortar is added in the container and mixed until a smooth and homogenous mixture is obtained. The mortar, which is now ready to apply and highly fluid, should be applied within maximum one hour.	
<ul style="list-style-type: none"> Interior and exterior. In concrete fastening and tasks of reinforced concrete In multi-purpose moulded anchorage tasks, in crane rails and piers, in the joints of roads and bridges 	





SRM – T, is a mineral-based, tixotropic, non-shrink structural repairing mortar for fibre-enhanced cement-based vertical applications. It is prepared with reinforcement of granulometric sand, cement and high quality chemical additives applied manually.

TECHNICAL DATA	
COMPOSITION	FIBER ENHANCED CEMENT BASED
COLOR	GREY
PACK SIZE	25 KG
PACK TYPE	BAG



APPLICATION DATA

COVERAGE	20KG / 1 SQM @ 10MM THK
CURING TIME	24 HRS

APPLICATION

The material is mixed with a low cycle mixer until a smooth mixture is obtained for minimum 3 minutes. The mortar is applied to the surface with a trowel in 10 mm and 40 mm thickness for each layer. For thicker applications, after the first layer is dried, the second layer is applied on the surface with the same method.

- In the repair of reinforced concrete construction elements
- For the protection of concretes against sulphate and chlorine effects
- For obtaining an impermeable and strong layer in exposed concrete





Nitomortar FC is a two component thixotropic, solvent free, compound based on epoxy resins, graded fillers and performance additives. It is applied directly to concrete substrates, without primer, and cures to a uniform smooth surface ready for over coating.

TECHNICAL DATA	
COMPOSITION	EPOXY RESIN
COLOR	GREY
PACK SIZE	4 LTRS
PACK TYPE	SET

EPOXY RESIN FAIRING COAT



APPLICATION DATA	
COVERAGE	1 LTR/ 5 SQM
CURING TIME	4 HRS
APPLICATION <p>Due to the easy workability of the product, a variety of instruments such as trowel, scraper, filling knife and squeegee can be used. After mixing, material can be taken directly from the can, or subdivided onto spot boards for individual applications.</p> <ul style="list-style-type: none"> Nitomortar FC is designed for application to minor imperfections in concrete surfaces. It is suitable for application from a feather-edge to 3 mm, and can be used in the following situations. 	





Renderoc FC is a single component ready to use blend of dry powders which requires only the site addition of clean water to produce a highly consistent cementitious mortar.

TECHNICAL DATA	
COMPOSITION	POLYMER MODIFIED CEMENT
COLOR	GREY
PACK SIZE	20 KG
PACK TYPE	BAG

EPOXY ANCHORING MORTAR



APPLICATION DATA

COVERAGE	1 BAG / 4 SQM
CURING TIME	4 HRS

APPLICATION

Apply the mixed Renderoc FC to the prepared substrate, up to 3 mm thickness, by steel trowel. It should be applied with the minimum of working and be allowed to partly set before finally trowelling to a smooth finish.

- Renderoc FC is designed for application to minor imperfections in concrete and masonry surfaces. It is suitable for application in the range of feather edge to 3 mm, and can be used in the following situations



GEOTEXTILES



Fibertex geotextiles are manufactured from virgin polypropylene fibres with added UV stabiliser. The basic strength of the Fibertex geotextiles is obtained by needle- punching the PP- fibres, which provides strong elastic bonding between fibres. Fibertex is highly durable and resistant to all natural occurring soil alkalis and acids.

TECHNICAL DATA

NAME	F 25	F 34	F 46	F 550M
COMPOSITION	POLYPROPYLENE FIBERS			
COLOR	GREY			
PACK SIZE	5.2 M x 150 M	5.2 x 100M	5.2 x 50M	
PACK TYPE	ROLLS			
THICKNESS	0.7MM	1.2MM	1.2MM	4.1MM
MASS	130 GSM	200 GSM	275 GSM	550 GSM
COMPRESSIVE STRENGTH	-	-	-	-



APPLICATION DATA

COVERAGE	PLEASE REFER TO PRODUCT TDS FOR MORE INFO
CURING TIME	N/A

APPLICATION

Prepare the surface by clearing debris, then unroll and place the geotextile over the area. Overlap edges (typically 300–500 mm), secure with pins or ballast, and cover with the specified material (soil, gravel, concrete, etc.).

- Road and railway construction. Drainage systems and retaining walls and embankments
- Landfills and erosion control. Coastal protection and riverbanks
- Landscaping and soil stabilization



POLYTEX PT110 110GSM



The Polytex range consists of state of the art modern, woven polypropylene slit film geotextiles, designed to be used in filtration, separation and reinforcement. Polytex multi-purpose geotextiles have extremely high strength to mass ratios at low elongations, thus offering a cost effective geosynthetic solution to a variety of subsurface problems.

TECHNICAL DATA

COMPOSITION	POLYPROPYLENE FIBERS
COLOR	GREY
PACK SIZE	2.5 M x 200 M
PACK TYPE	ROLL

WOVEN GEOTEXTILES

APPLICATION DATA

COVERAGE	500 SQM
CURING TIME	N/A

APPLICATION

To apply woven geotextiles, prepare and level the surface, then unroll the fabric with 300–500 mm overlaps. Secure it with pins or weights, and cover with soil or aggregate carefully before compaction.

- Road and railway construction. Retaining walls and embankments
- Landfills and erosion control. Coastal protection and riverbanks
- Landscaping and soil stabilization



GEOMEMBRANES

DRAINAGE BOARD



DRAIN-B is high density polyethylene (HDPE) based, plant roots and decay resistance drainage dimple board to protect curtain walls against water and moisture by separated from the earth.

TECHNICAL DATA

NAME	DRAIN B	DRAIN B	DRAIN B GEO
COMPOSITION	POLYETHYLENE	POLYETHYLENE	+ NONWOVEN FIBER
COLOR	BLACK	BLACK	BLACK + GREY
PACK SIZE	2M X 20M	2.4M X 20M	2M X 24M
PACK TYPE	ROLLS	ROLLS	ROLLS
THICKNESS	0.4 MM	0.5 MM	MIN 0.43 MM
WEIGHT	400 GSM	400 GSM	400 GSM
COMPRESSIVE STRENGTH	120 KN	150 KN	110 KN

DRAINAGE DIMPLE BOARD



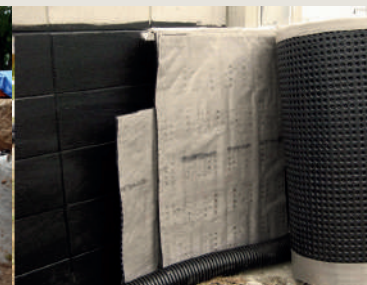
APPLICATION DATA

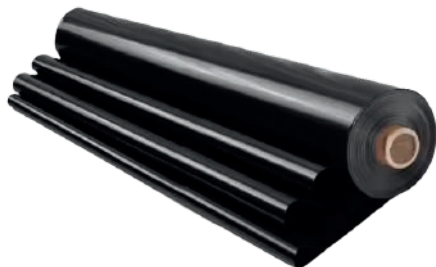
COVERAGE	40 SQM - 48 SQM
CURING TIME	N/A

APPLICATION

DRAIN-B is inserted as 15 cm above from the waterproofing layer and bubbles it has faced with application surface. Waterproofing surface must be protected during the montage. At least 20 cm overlapping and additional fastening equipment is need on the plate joint areas.

- Used in retaining walls, planters.





Geomembranes are impermeable synthetic liners used to control fluid or gas movement in a wide range of applications. Made from materials like HDPE, they are commonly used in landfills, ponds, tanks, and containment structures to prevent leakage and environmental contamination.

TECHNICAL DATA

NAME	HDPE GM 13	HDPE GM 13	LDPE 250
COMPOSITION	POLYETHYLENE	POLYETHYLENE	POLYETHYLENE
COLOR	BLACK	BLACK	BLACK
PACK SIZE	7.5M X 140M	5.8M X 140M	4M X 25M
PACK TYPE	ROLLS	ROLLS	ROLLS
THICKNESS	1.5 MM	1.5 MM	0.25 MM
WEIGHT	-	-	-
COMPRESSIVE STRENGTH	-	-	-



APPLICATION DATA

COVERAGE	PLEASE REFER TO PRODUCT TDS FOR MORE INFO
CURING TIME	N/A

APPLICATION

To apply a geomembrane, first prepare and level the substrate, removing sharp objects and debris. Unroll and position the geomembrane sheets, allowing for proper overlap (usually 100–150 mm). Weld the seams using hot wedge or extrusion welding, then test the joints for leaks before backfilling or covering.

- Landfills, ponds and lagoons, canals and reservoirs
- Mining operations, waste water treatment plants
- Environmental containment structures



ALVATECH WELDING ROD



ALVATECH WELD ROD is used for joining the liners by extrusion or by adding melted material (solder). It has a polyethylene based formulation giving it a high weldability and good compatibility with Alvatech Geomembranes.

TECHNICAL DATA	
COMPOSITION	POLYETHYLENE
COLOR	GREY
PACK SIZE	400 MT - 4MM THK
PACK TYPE	SHEETS



APPLICATION DATA	
COVERAGE	PLEASE REFER TO PRODUCT TDS FOR MORE INFO
CURING TIME	PLEASE REFER TO PRODUCT TDS FOR MORE INFO
APPLICATION Weld by extrusion is carried out with a portable extruder, which melts the Alvatech weld rod, creating a polyethylene seal that joints together both pieces of geomembrane.	





Geomembranes are impermeable synthetic liners used to control fluid or gas movement in a wide range of applications. Made from materials like HDPE, they are commonly used in landfills, ponds, tanks, and containment structures to prevent leakage and environmental contamination.

TECHNICAL DATA

NAME	HDPE GM 13	LLDPE GM-17	LLDPE GM-17
COMPOSITION	POLYETHYLENE	POLYETHYLENE	POLYETHYLENE
COLOR	BLACK	BLACK	BLACK
PACK SIZE	7M X 150M	1.75M X 70M	7M X 210M
PACK TYPE	ROLLS	ROLLS	ROLLS
THICKNESS	1.5 MM	0.5 MM	0.5 MM
WEIGHT	-	-	-
COMPRESSIVE STRENGTH	-	-	-



APPLICATION DATA

COVERAGE	PLEASE REFER TO PRODUCT TDS FOR MORE INFO
CURING TIME	N/A

APPLICATION

To apply a geomembrane, first prepare and level the substrate, removing sharp objects and debris. Unroll and position the geomembrane sheets, allowing for proper overlap (usually 100–150 mm). Weld the seams using hot wedge or extrusion welding, then test the joints for leaks before backfilling or covering.

- Landfills, ponds and lagoons, canals and reservoirs
- Mining operations, waste water treatment plants
- Environmental containment structures



JOINT SEALANTS ADHESIVES

B - ROD



B-ROD is a backer rod for joints that produced with polyethylene.

Elastic and compressed easily.

Waterproof and water impermeable.

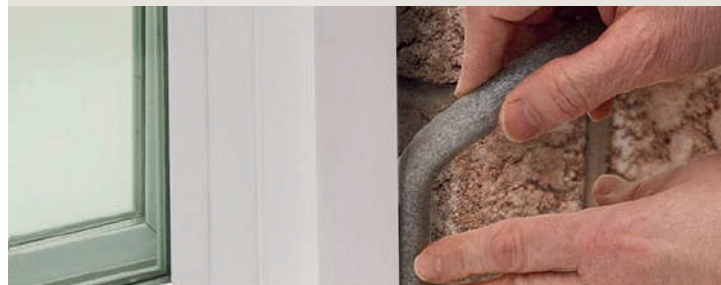
Odourless.

Decreases consumption of sealants in the joints.

TECHNICAL DATA	
COMPOSITION	POLYETHYLENE
COLOR	GREY
PACK SIZE	10MM/15MM/20MM/25MM
PACK TYPE	CHORD



APPLICATION DATA	
COVERAGE	N/A
CURING TIME	N/A
APPLICATION Easy to apply. Backing rod must be 30% more thick than width of joint and it should be placed into the joint by compressing. Then, surface is coated with sealants as polyurethane, polysulphide, acrylic etc.	
<ul style="list-style-type: none"> • It is used for waterproofing sealants in joints and dilatations. • It is used as filler in the joint of between doors, windows and walls. 	





Bostik H785 HIGH TACK is a high quality professional hybrid adhesive with an extremely high initial tack. Bostik H785 HIGH TACK fulfil BREEAM specifications mentioned in chapter 'Health and Wellbeing', Hea 02 Indoor Air Quality, regarding volatile organic compound (VOC) emission levels (products).

TECHNICAL DATA

COMPOSITION	
COLOR	WHITE
PACK SIZE	290 ML
PACK TYPE	CARTRIDGE

INSTANT GRAB ADHESIVE



APPLICATION DATA

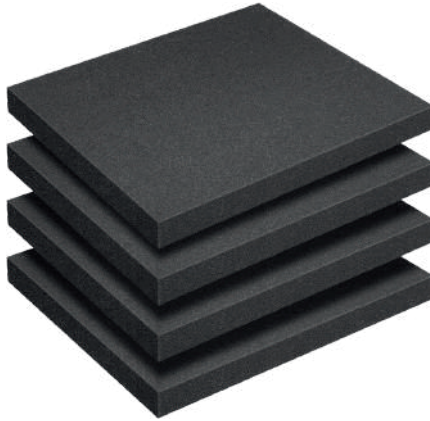
COVERAGE	PLEASE REFER TO PRODUCT TDS FOR MORE INFO
CURING TIME	24 HRS

APPLICATION

Apply adhesive with the provided V-nozzle in a 'ventilating way' in vertical stripes with 10 - 20cm distance between stripes. Bring the materials into position and press firmly so that the adhesive is a minimum of 2 - 3mm thick between material and surface

- Bostik H785 HIGH TACK was specifically developed as a universal high grip and high strength adhesive for bonding many building materials such as: stone, concrete, mirrors, glass, plasterboard, PU, PVC, hard plastics, enamel, ceramic, copper, lead, zinc, tin, aluminium, metals, alloys, stainless steel, HPL and cement fibre panels and wood.





Hydrocell XL is a cross linked, non-absorbent, semi-rigid, cellular polyethylene joint filler used for forming expansion joints in concrete, brickwork and blockwork. The product provides excellent support to sealants subject to hydrostatic pressure and is particularly recommended for water retaining or water excluding structures

TECHNICAL DATA

COMPOSITION	POLYETHYLENE
COLOR	GREY
PACK SIZE	1M X 2M - 10MM ,15MM, 20MM, 25MM THK
PACK TYPE	SHEETS



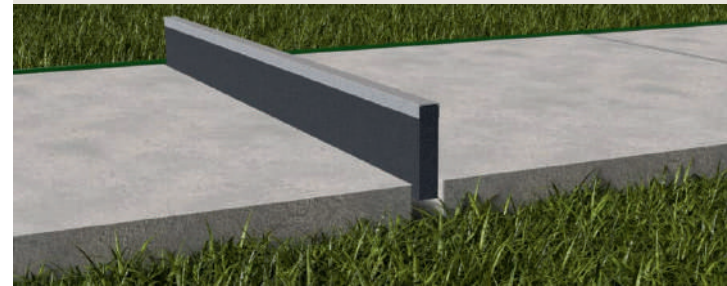
APPLICATION DATA

COVERAGE	PLEASE REFER TO PRODUCT TDS FOR MORE INFO
CURING TIME	PLEASE REFER TO PRODUCT TDS FOR MORE INFO

APPLICATION

Cut off a strip to the required depth. Pin the strip back by using 50 mm nails at approximately 100 mm intervals. Install the filler flush with the finished surface. Before sealing, the top strip can then be pulled easily from the joint to provide an uncontaminated sealing slot ready for sealing.

- Potable water reservoirs, culverts and canals, sewage tanks
- Roadways and hardstandings, retaining walls
- Basement structures and subways, runways, taxiways and aprons





Bostik PU Seal is a polyurethane-based, one-component sealing material with excellent waterproofing and adhesion qualities. It is cured with the air humidity and can be used indoors and outdoors.

TECHNICAL DATA

COMPOSITION	POLYETHYLENE
COLOR	GREY
PACK SIZE	600 ML
PACK TYPE	SAUSAGE



APPLICATION DATA

COVERAGE	PLEASE REFER TO PRODUCT TDS FOR MORE INFO
CURING TIME	3 HRS

APPLICATION

The tip of the cartridge is cut and a plastic cap is fixed prior to use. The joints should be filled at one time and without gaps during the application. After the joints are filled with PU Seal, the surface is smoothened with a spatula or a wet sponge immediately.

- Developed for use in constant gaps and moveable joints in construction sector
- In the joints of concrete prefabricated construction materials
- In connection areas of the wall and the floor in balconies and terraces





UNIVERSAL SILICONE



Silicone Universal is a versatile acetoxysilicone sealant which cures by reacting to moisture to form a durable elastic rubber seal. The product is UV and weather resistant.

TECHNICAL DATA

COMPOSITION	ACETOXY SILICONE
COLOR	CLEAR, WHITE, BLACK
PACK SIZE	300 G
PACK TYPE	CARTRIDGE



SILICONE SEALANT



APPLICATION DATA

COVERAGE	PLEASE REFER TO PRODUCT TDS FOR MORE INFO
CURING TIME	PLEASE REFER TO PRODUCT TDS FOR MORE INFO

APPLICATION

A joint with the correct dimensions is able to absorb movements between building materials. The joint depth should always be in the correct relationship of the joint width.

- Excellent resistance to UV, water and weather. Perfect adhesion to glass, painted wood, ceramic and enamelled
- Permanently elastic
- Mould resistant





HEAD OFFICE

OPPOSITE PRINTEX JUNCTION BUS
STOP, SPINTEX ROAD, ACCRA

SPINTEX | TUDU | WEIJA | KUMASI

T - +233 527 777 799

E - info@hircogroup.com

WWW.HIRALCOGROUP.COM

WE BUILD THE FUTURE
